



**Lexicon**  
Management Institute  
of Leadership & Excellence

# LEXICON MANAGEMENT INSTITUTE OF LEADERSHIP & EXCELLENCE, PUNE

**Post Graduate Diploma in Management**

AICTE Approved (Institute ID: 1-4259511)



**Admissions Brochure | PGDM 2025-27**



**OUTLOOK**



**Times B School**



**Business World**



# ABOUT THE LEXICON FAMILY

Founded in 2006 in Pune, The Lexicon Group has evolved into a premier educational and business leader, empowering individuals at every stage of life. From schools and preschools to institutes specializing in management, hotel management, media, and animation, as well as a dedicated therapy center for specially-abled students, we are committed to delivering quality education and transformative services. Beyond the educational sphere, The Lexicon Group has diversified into fields such as research, media, law, and wellness. Guided by a commitment to excellence and entrepreneurial values, we continue to grow, with an unwavering focus on quality and integrity at our core.

## THE LEXICON GROUP OF INSTITUTES



## GROUP OF COMPANIES



## ABOUT LEXICON MILE

---

Lexicon Management Institute of Leadership & Excellence (Lexicon MILE) Pune founded in 2009 as part of the Lexicon Group, has been transforming business education for the past 15 years. Our two-year, full-time Post Graduate Diploma in Management (PGDM) program goes beyond traditional learning, with a bold emphasis on entrepreneurship and start-up culture. At Lexicon MILE, we shape versatile leaders, ready to thrive in managerial roles at top organizations, and qualified with the skills, confidence, and entrepreneurial mindset essential for success in specialized career paths.



### VISION

To be a globally recognized Institute for management education and leadership excellence, fostering innovative leaders who contribute to sustainable business practices and their organizations.



### MISSION

Our mission is to provide a transformative learning process for aspiring global leaders in industry, management and the human care industry, bringing together academic rigor with real-world relevance and experiences. Lexicon MILE is therefore committed to fostering an environment of sustained academic progress, innovation, and inclusivity. This is enabled with strong research and industry internships, industry collaboration and experiential learning. Thus, the Institute aims to develop socially responsible leaders to address the challenges of the rapidly changing global industrial environment.



# THE LEXICON MILE ADVANTAGE

---

01

## EXPERIENTIAL LEARNING

Lexicon MILE bridges the gap between academics and industry through experiential learning. Students engage in hands-on projects, internships, and workshops that simulate real-world scenarios. This approach not only enhances their practical skills but also ensures they are career-ready, equipped to navigate complex business environments with confidence.

02

## ENTREPRENEURIAL MINDSET

At Lexicon MILE, we're committed to shaping the future by nurturing an entrepreneurial spirit. Here, students learn to think not only like entrepreneurs but also as social entrepreneurs who are equipped to drive positive impact in both business and society.

03

## DIGITAL TRANSFORMATION

At Lexicon MILE, we are at the forefront of digital transformation, preparing students to lead in an ever-evolving world. Through a focus on social innovation, sustainability, and cutting-edge technologies, we equip students with the tools to drive meaningful change. Our curriculum integrates analytics, artificial intelligence, and digital strategies to ensure our students are ready to shape the future.

04

## SOCIAL INNOVATION

At Lexicon MILE, social innovation is at the core of our values. We empower students to address societal challenges through creative and impactful initiatives, fostering a sense of responsibility and leadership. By engaging in meaningful projects, students develop problem-solving skills while contributing to the greater good, preparing them to lead with purpose.

05

## PLACEMENT MENTORSHIP

We empower our students at every stage of their career journey, from crafting standout portfolios and optimizing LinkedIn profiles to mastering mock interviews. Our comprehensive training program includes AI-driven interview preparation and soft skills development, ensuring students are fully equipped to impress potential employers and land their dream job.



*"At Lexicon, we believe that education is the foundation for shaping a better tomorrow. With a relentless focus on quality, integrity, and dedication, we aim to empower each student with the tools to excel, lead, and make a meaningful difference in the world."*

**Mr. S.D. Sharma**

*Chairman, The Lexicon Group*

*"Empowering future generations with opportunities and excellence is our mission at Lexicon. We are dedicated to making world-class business education accessible to the youth, preparing them to lead and innovate in a rapidly evolving world."*

**Mr. Pankaj Sharma**

*President and Managing Trustee,  
The Lexicon Group, Chairman & MD,  
Pune Times Mirror, Civic Mirror and MultiFit*



*"Success begins with three simple words: Believe in Yourself. At Lexicon, our goal is to see that spark—the smile and the light in our students' eyes—because that's the true return on our commitment to their growth and potential."*

**Mr. Neeraj Sharma**

*Vice Chairman, The Lexicon Group &  
Director, Pune Times Mirror, Civic Mirror  
& MultiFit*





## MESSAGE FROM THE INSTITUTE DIRECTOR

**DR. BIDYANAND JHA**  
Institute Director,  
Lexicon MILE

---

### **Dear Aspirants,**

At Lexicon MILE, we're driven by a powerful mission: to redefine management education by cultivating leaders who will shape the future of business. Here, we go beyond traditional teaching to provide an immersive, transformative learning experience that equips students with the knowledge, skills, and innovative mindsets essential for success in today's fast-evolving business world.

Our journey is fuelled by passion for blending cutting-edge research with practical applications. We firmly believe that a strong educational foundation paired with real-world insights is the cornerstone of leadership development. Our curriculum is meticulously designed to ignite critical thinking, spark creativity, and foster ethical decision-making. From digital transformation to design thinking and social entrepreneurship, we ensure our students receive a modern business education that prepares them to lead with confidence.

Experiential learning is at the core of Lexicon MILE. Through hands-on projects, dynamic learning methodologies, and unique industry partnerships, students gain invaluable experiences that go beyond the classroom. Our strong ties with industry leaders provide invaluable opportunities for internships, networking, and real-world problem-solving that enhance both learning and career readiness.

As we continue to innovate and expand, I invite each of you to embrace the journey ahead. Together, let's push the boundaries of knowledge, strive for excellence, and make a lasting impact in the world of business.

To our dedicated faculty, committed staff, valued industry partners, and talented students—thank you for your unwavering support and for being an integral part of the Lexicon MILE community. Let's continue to create, learn, and lead with purpose.

## ADVISORY COUNCIL

---



**MR. CHARAN NAGARAJ**

Head, AppleCare  
Digital Hub, Bangalore



**MR. ADITYA RAHUL**

Talent Advisor,  
Allstate Insurance, US



**MR. SURAJ NARAIN**

CEO and Founder, SearchBourne  
Consulting Pvt. Ltd. Pune



**MR. AJIT THATTE**

Former CEO, Enkay  
Technologies (India) Pvt. Ltd.  
& Faculty and Alumnus  
of IIT Kharagpur



**PROF. RAJEEV SHARMA**

Associate Professor (Retired),  
IIM Ahmedabad



**MR. PRAVEEN RATTAN**

Former Director, Amcor  
Rigid Plastics, Volunteer A V  
Sindhu Vidya Bhavan, & Faculty  
& Alumnus of IIM Calcutta



**MR. ANUPAN TYAGI**

Founder Director,  
Prymacare Turismo  
Pvt. Ltd.



**PROF. (DR.)  
SANJEEV SONAWANE**

Former CEO, Enkay  
Technologies (India) Pvt. Ltd.  
& Faculty and Alumnus  
of IIT Kharagpur



**MR. JAYANT PATWARDHAN**

Executive Advisor - Everest Group  
& Advisor - Dallas Ventures Capital

## RANKINGS



## AWARDS

- Awarded Best B-School in Leadership Excellence by BW Education - Future of Management Education Awards 2023.
- Recognised among the Top 100 Institutes in India for Digital Distinction: Technology Conformance to NEP by ASSOCHAM National Council 2022.
- Awarded Best Private Management Institute in India for Placement 2022 by CEGR.
- Awarded Best Management Institute for Placements 2020 by Integrated Chambers of Commerce and Industry.
- Awarded Dewang Mehta National Education Award for Best Emerging B-School.
- Awarded BBC Knowledge Education Leadership Award for Best Academic & Industry Interface.
- Awarded at AsiaOne awards in Singapore for World's Greatest Brand.
- Awarded by the Asia Education Summit & Award for Best Innovative Management Institute.
- Awarded Lead Lab Centre of Excellence Award for Excellence's Vision and Contribution towards nurturing Youth Leadership.



# PGDM

## POST GRADUATE DIPLOMA IN MANAGEMENT

---

The PGDM program at Lexicon MILE is a 2-year, full-time AICTE-approved (1-4259511) course, crafted to develop well-rounded business leaders with practical skills and strategic insights. This comprehensive program blends core business principles with real-world applications, allowing students to gain hands-on experience through industry interactions and mentorship. With a curriculum that emphasizes critical thinking, leadership, and global perspectives, the PGDM program at Lexicon MILE fosters both personal and professional growth, setting students on a path to impactful careers.

# COURSES OFFERED

**PGDM**  
Marketing and  
Finance

**PGDM**  
Research  
and Business  
Analytics

**PGDM\***  
Finance, Marketing  
& Human Resource  
Management

## ELIGIBILITY:

Passed any Bachelors Degree of minimum 3 years duration.

Obtained at least 50% marks (45% marks in case of candidates belonging to reserved category) in the qualifying examination.

We accept scores of CAT, MAT, CMAT, MH-CET, XAT, ATMA, GMAT, CUET Entrance Exam.

\*Course name change in process.



## FOCUS AREAS

---

Managers, who are business centric and have focus on innovation and sustainability are greatly in demand. The learning journey at Lexicon MILE prepares you for the demands of the workforce for the 4th Industrial Revolution (2021 and beyond).

**The key focus areas of the program are as below:**



### **BUSINESS EXPERTISE**

Acquire skills and knowledge in key managerial areas such as Marketing, Finance, Operations, Analytics, Sales and Human Resources.



### **DIGITAL TRANSFORMATION**

Lexicon MILE is dedicated to driving digital transformation, equipping students with the skills and mindset needed for a tech-driven world. Our approach integrates advanced digital tools and strategies, preparing future leaders for success in a rapidly evolving digital landscape.



### **ENTREPRENEURIAL MINDSET**

Lexicon MILE fosters an entrepreneurial mindset, encouraging innovation, creativity, and resilience among students. We empower future leaders to think independently and approach challenges with confidence and strategic insight.



### **INTERDISCIPLINARY APPROACH**

Lexicon MILE emphasizes an interdisciplinary approach, blending knowledge from diverse fields to provide students with a well-rounded perspective. This prepares them to tackle complex, real-world challenges with versatile skills and adaptive thinking.



### **EXPERIENTIAL IMMERSIONS**

We provide students with hands-on learning experiences that bridge classroom knowledge with real-world applications. These immersive opportunities empower students to develop practical skills, critical thinking, and industry insights essential for dynamic careers.

*"Each of us has a purpose—our own vision, our unique dream. Ask yourself, 'What do I aspire to be?' Write it down, and let that guide your entire approach to education. When your goals are clear, every step you take aligns with your true path."*

**DR. KIRAN BEDI**

*Former I.A. Lawyer at P&O, Founder - India Vision Foundation and Kappal (aka) Foundation*

# COURSE CURRICULUM

The courses and curriculum is only representative and may be subject to change as determined by the faculty and academic department. Please check with academic program office for the latest curriculum schedule and courses taught.

## CORE SUBJECTS

- ▶ Economics for Managers
- ▶ Entrepreneurship
- ▶ Managerial Accounting
- ▶ Organizational Behaviour
- ▶ Essentials of Marketing
- ▶ Human Resource Management
- ▶ Quantitative Techniques in Management
- ▶ Production & Operations Management
- ▶ Legal Aspects of Business
- ▶ Managerial Communication
- ▶ Fundamentals of Business Analytics
- ▶ Basic Financial Management
- ▶ Research Methodology
- ▶ Introduction to Data Visualization
- ▶ Marketing Research
- ▶ Corporate Governance
- ▶ Project Management
- ▶ Strategic Management
- ▶ Campus to Corporate

## SKILL DEVELOPMENT SUBJECTS

- ▶ MS Office
- ▶ Neuro Linguistic Programming (NLP)
- ▶ Supply Chain Management
- ▶ Digital Marketing
- ▶ AI Powered Digital Marketing
- ▶ Financial Modelling
- ▶ Application of HR Analytics in the Corporate Sector
- ▶ Tools for Research & Business Analytics



## ELECTIVE SUBJECTS

---

The courses and curriculum is only representative and may be subject to change as determined by the faculty and academic department. Please check with academic program office for the latest curriculum schedule and courses taught.

### MARKETING

- ▶ Consumer Behaviour
- ▶ Integrated Marketing Communication
- ▶ Digital and Social Media Marketing
- ▶ Sales & Distribution Management and Metrics
- ▶ Services Marketing
- ▶ Industrial Marketing
- ▶ Retail Marketing
- ▶ Rural Marketing
- ▶ Product & Brand Management
- ▶ Fundamental Application of Business Analytics - Marketing

### FINANCE

- ▶ Investment Analysis and Portfolio Management
- ▶ Finance for Manager
- ▶ Direct Taxes
- ▶ Financial Markets and Banking Operations
- ▶ Investment Banking & Risk Management
- ▶ Corporate Valuation Methods & Technology
- ▶ Fintech
- ▶ Foreign Exchange Management
- ▶ Mergers & Acquisitions
- ▶ Fundamental Application of Business Analytics - Finance

### HUMAN RESOURCES

- ▶ Learning & Development
- ▶ Lab in Recruitment and Selection
- ▶ Employee Relations & Labor Economics
- ▶ Organization Development & Learning
- ▶ Performance Management System
- ▶ Compensation & Benefits
- ▶ Competency Mapping
- ▶ Human Resources Information System (HRIS)
- ▶ Strategic HRM
- ▶ Fundamental Application of Business Analytics - HR

### RESEARCH AND BUSINESS ANALYTICS

- ▶ Advanced Statistics & Quantitative Techniques
- ▶ Database Management System
- ▶ Introduction to R & Python
- ▶ Social Media Analytics
- ▶ Advanced R & Python Applications
- ▶ Data Analytics
- ▶ Innovation and Technology Management
- ▶ Essentials of Technology

“

“Money is neither good nor bad—it’s pure potential. What matters is how you choose to use it: to create good or to cause harm.”

**HIS EMINENCE THE 8TH  
CHOKYONG PALGA RINPOCHE**

*Spiritual Leader and Motivational Speaker*



# PROGRAM OUTCOMES & OBJECTIVES

---

## PGDM PROGRAM OUTCOMES (POs)

- ▶ Apply knowledge of fundamental business management principles in marketing, finance, human resources, and business analytics.
- ▶ Evaluate business strategies, market research, and develop data-driven recommendations to achieve organizational goals.
- ▶ Demonstrate effective communication, interpersonal, and leadership skills in a multicultural environment.
- ▶ Adapt with new skills, technologies, embracing innovation, and demonstrating ethical conduct in professional practices.
- ▶ Understand impact of business practices on stakeholders with sustainable businesses.

## PGDM EDUCATIONAL OBJECTIVES (PEOs)

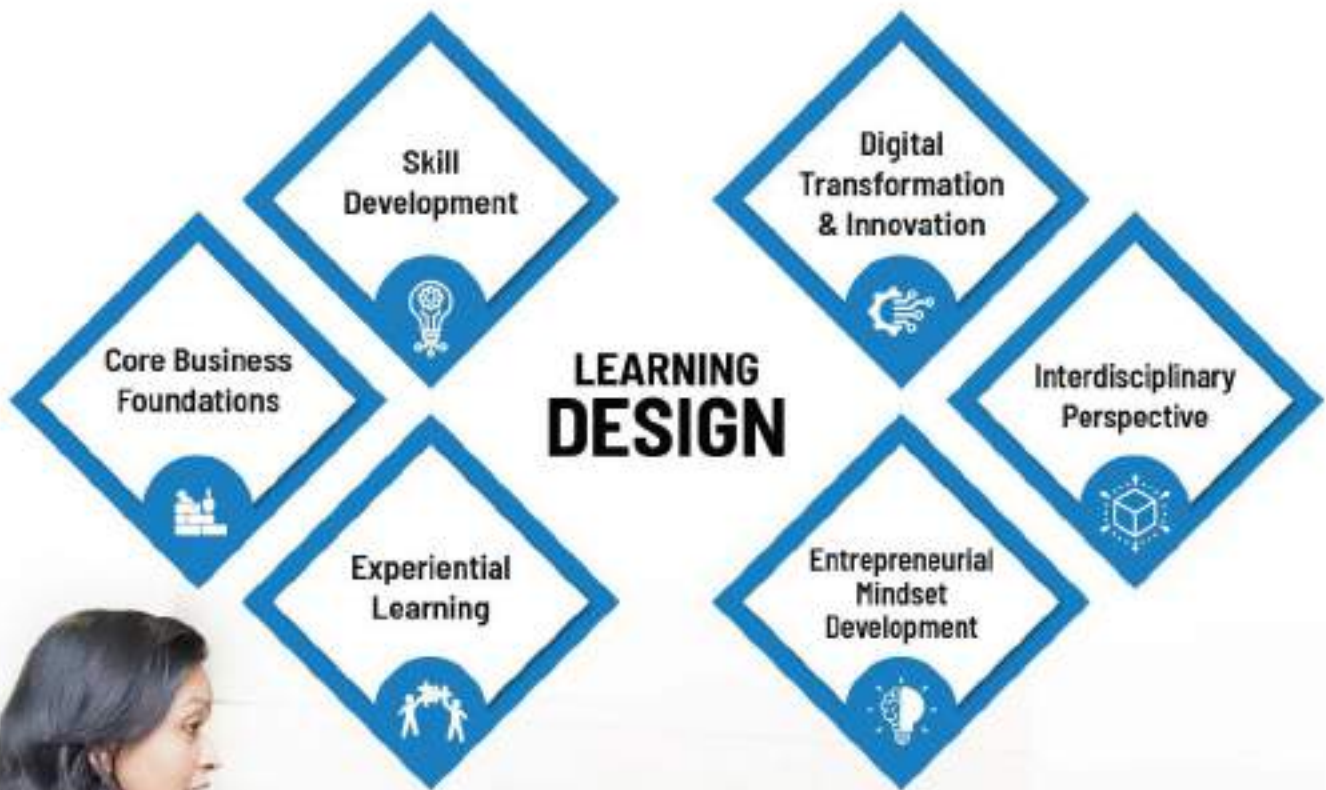
- ▶ Equip students with the competencies required to manage people, resources and projects to achieve organizational objectives.
- ▶ Enable students with the requisite knowledge, skills and attitudes to emerge as effective managers.
- ▶ Empower students with the essential skills, abilities to succeed and excel in the workforce and make meaningful contributions to their organization.
- ▶ Distinguish students with critical thinking skills and encourage the application of management concepts through analytical paradigms.



# LEARNING JOURNEY



To meet the evolving demands of future employers and the skillset requirements of tomorrow's workforce, Lexicon MILE has carefully curated a transformative learning journey with insights from academicians, top industry leaders, venture capitalists, and serial entrepreneurs. This journey is designed to guide students toward business excellence, equipping them with an innovative and entrepreneurial mindset, hands-on industry exposure, and critical career skills. Each aspect of our program focuses on developing adaptable, forward-thinking professionals ready to make impactful contributions in their fields.





# Experiential Immersions

---

As globalization and technological advancements dissolve traditional boundaries, a deep understanding of human behavior across cultures has become essential. The Lexicon MILE PGDM program embraces this need with a strong focus on experiential learning, dedicating 25 percent of the curriculum to immersive field experiences.

- **Industrial Visits**
- **TEDx**
- **Conclaves & Summits**
- **Organizational Study Projects**
- **Workshops & Leadership Series**



## INDUSTRIAL VISITS

Industrial visits provide students with invaluable exposure to real-world business operations. These visits help bridge the gap between classroom learning and industry practices by allowing students to observe and interact with industry leaders. Students gain a deeper understanding of various sectors, operations, and corporate cultures, enhancing their academic experience and preparing them for their future careers.

## TEDx

Lexicon MILE is proud to host TEDx events, offering students the chance to learn from global thought leaders and innovators. These events expose students to diverse ideas, encourage critical thinking, and inspire them to think creatively. Participating in TEDx not only enhances students' knowledge but also gives them a platform to become thought leaders themselves, contributing to discussions on important topics.



## CONCLAVES & SUMMITS

At Lexicon MILE, Conclaves & Summits provide students with unique opportunities to engage with industry leaders and experts in specialized fields. These events, including the DEI Conclave, ShaSara's Entrepreneurship Summit, Drive for Me! Gut, Startup Summit, Hack IPL, and HR Summit: People Power, address current business challenges and trends across diverse sectors such as leadership, innovation, entrepreneurship, and global business. By hosting these specialization-specific summits, the Institute ensures that students receive focused insights into their areas of interest, fostering deep discussions and valuable learning opportunities. These events not only expand students' knowledge but also give them a chance to network with professionals, creating a platform for collaboration and future career growth.

## ORGANIZATIONAL STUDY PROJECTS

Organizational Study Projects (OSPs) at Linncon MBE allow students to dive deep into the functioning of organizations. By working on live case studies and projects within established companies, students gain hands-on experience in problem-solving and strategic decision-making. This exposure helps students build practical skills and develop a deeper understanding of business operations from an organizational perspective.



## WORKSHOPS & LEADERSHIP SERIES

Workshops & Leadership Series are designed to develop essential business and leadership skills. Students participate in interactive sessions that focus on communication, problem-solving, decision-making, and strategic leadership. These sessions provide students with the tools to lead effectively in the business world and help them sharpen their interpersonal and professional abilities.

## CLASS PROFILE

---

**22 YEARS**  
AVERAGE AGE

**19**  
STATES REPRESENTED

**15%**  
STUDENTS WITH  
WORK EXPERIENCE

**41%**  
WOMEN

## STATES REPRESENTED



# PLACEMENTS

Our robust industry connections and focus on skill development ensure that students are well-prepared for the challenges of the corporate world. Through campus recruitment drives, internships, and industry partnerships, we provide ample opportunities for students to secure placements in leading organizations. With a strong emphasis on holistic development, we equip our students with the necessary tools to excel in their careers, ensuring that they transition seamlessly from academics to professional success.



**PERCENTAGE  
OF STUDENTS  
PLACED**



**Total  
COMPANIES  
VISITED**



**HIGHEST CTC**



**AVERAGE CTC**



# INTERNSHIP

Internships are an integral part of our students' learning experience, bridging the gap between classroom theory and real-world application. Our robust internship program offers students hands-on exposure to diverse industries, allowing them to apply their skills in practical settings, build professional networks, and gain valuable insights into their chosen fields. Through partnerships with leading companies, we ensure that students are placed in dynamic roles where they can develop industry-specific skills, work on live projects, and learn directly from industry experts. These experiences prepare them for successful careers by building confidence, expertise, and a professional edge.

51,000

Per Month  
Regional Internship Demand

16,232

Per Month  
Average Internship Demand

28,750

Per Month  
Average Internship Demand  
Top 5% placed students

25,833

Per Month  
Average Internship Demand  
Top 25% placed students

21,895

Per Month  
Average Internship Demand  
Top 50% placed students

20,000

Per Month  
Market Demand



# PLACEMENTS & INTERNSHIPS

 HSBC	 Allstate	 BNY MELLON	 accenture		
 wipro	 eClerx	 TATA	 KALYANI	 LG	 FORCE MOTORS
 BAJAJ   Allianz	 citibank	 IDFC FIRST Bank	 KPMG		
 paytm	 amazon	 Reliance RETAIL	 jaro education		
 BHARAT LAB <i>Smart for all. Simple too!</i>	 TIAA	 tcs	 OCWEN	 Wolters Kluwer	
 SG Analytics <i>Life's Possible</i>	 DELHIVERY <i>Small World</i>	 POLYCAB	 JK Files (India) Limited <i>(A Subsidiary of JK Tyre Limited)</i>		
 POONAWALLA FINCORP	 digit	 NIP GROUP	 Groww	 Godrej	
 LODHA <i>BUILDING A BETTER LIFE</i>	 Knight Frank	 SBI <i>Service and Satisfaction</i>	 TTC Limited	 firstcry	
 airtel	 PHILIPS	 Mahindra	 Marriott INTERNATIONAL		
 HYATT REGENCY	 THE TIMES OF INDIA	 firstsource	 MARKETSANDMARKETS		
 MACHINTEL	 satSuru <i>Think Travel, Think Us</i>	 Flipkart	 indiamart		
 PIAGGIO	 WNS	 AXA	 ICICI Bank		

# PLACEMENTS & INTERNSHIPS



and many more

# ROADMAP

---

HOW WE WILL HELP YOU HELP YOURSELF

STEP 01  
EVALUATE



STEP 02  
DESIGN



STEP 03  
PREPARATION



STEP 04  
PLACEMENT





"Everyone dreams, yet many forget their dreams not out of fear, but because they promise a life so extraordinary it feels unreal. If we all dared to remember and pursue those dreams, imagine how much more happiness the world would hold."

## **PRAHLAD KAKKAR**

Advertising Film Director,  
Genesis Film Production Pvt. Ltd.



# LIFE AT LEXICON

At Lexicon MILE, campus life is about living your full potential! From cultural events and intellectual discussions to career workshops and creative clubs, our environment fosters all-around growth and learning beyond the classroom. Embrace a journey that challenges you, inspires you, and prepares you for every step ahead.

## COUNCIL AND COMMITTEE



### STUDENT COUNCIL

Lexicon MILE is a student driven Institute. The Student Council drives all the student related academic, non-academic activities and events. The premier and coveted positions in the council include the President, Vice President, and Secretary along with various Committee Heads and other members. The Investiture Ceremony inducts the Student Council Members into the council through an oath, which the students abide by, while being in office for the same, for that academic year.



### MARKETING & PR COMMITTEE

This committee is responsible for handling the development and implementation of communications plans across different media platforms. It manages all social media programs and activities for the students. The concept is to manage social communication for events, increase profitability, and integrate marketing with communication effectiveness



### PLACEMENT COMMITTEE

The Placement Committee is a student-led committee that connects industry and students. They organize keynote speeches for students by industry professionals and stalwarts to notify them of practical industry-wide trends. They also organize corporate events to engage students on industry trends.



# LIFE AT LEXICON



## EVENT COMMITTEE

This committee maintains and promotes togetherness, adaptability, and institute culture. Fostering healthy interaction among students is for the benefit of themselves and the nation. To provide students with engaging experiences during their time at the campus, the event committee considers and plans different engaging events.



## SPORTS COMMITTEE

The sports committee's vision is to organize sports training, coaching, and education for everyone so that they can learn how to stay physically fit. The committee hopes to instill qualities like sportsmanship, team spirit, and bonding. It is intended to serve the student community's interests in competitive sports and other extracurricular opportunities, both indoors and outdoors.



## SOCIAL WELFARE COMMITTEE

At Lexicon MILE, the Societal Welfare Committee empowers students to lead impactful initiatives that contribute to the community. Through volunteer work, social drives, and awareness campaigns, this committee fosters a sense of responsibility and positive change.



## CANTEEN COMMITTEE

The Canteen Committee ensures a healthy, diverse, and enjoyable dining experience for students. By gathering feedback and working closely with food vendors, this team enhances the quality and variety of food options available on campus.



## DISCIPLINE COMMITTEE

The Discipline Committee upholds a respectful and harmonious environment at Lexicon MILE. This committee is responsible for promoting the institution's code of conduct, addressing issues responsibly, and maintaining campus decorum.



# LIFE AT LEXICON



## CULTURAL COMMITTEE - KALA

The Cultural Committee, known as Kala, is the heart of Lexicon MILE's vibrant campus life. This committee provides a dynamic platform for students to showcase their talents in art, music, dance, theater, and more. Through organizing cultural events, festivals, and talent shows, Kala fosters creativity and self-expression, bringing students together to celebrate diverse cultures and artistic skills. It's where students can connect, collaborate, and leave their mark on campus through their unique talents and passion for the arts.

### CLUBS

- ▶ **Lexifin (Finance Club)**
- ▶ **Marketing Club**
- ▶ **Hridayam Club (HR Club)**
- ▶ **Data Doodle (Research & Business Analytics Club)**
- ▶ **MileStone (E-sports Community)**
- ▶ **E-Cell (Entrepreneurship Club)**



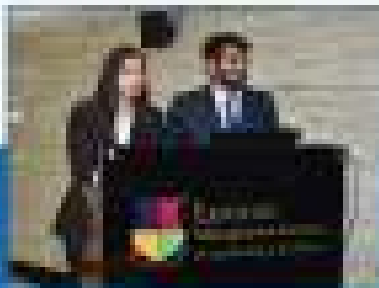
## EVENTS AT LEXICON MILE

- ▶ Lexicon Cricket Premiere League
- ▶ Lexicon Heartbeats
- ▶ Bharat Leadership Award
- ▶ People Power HR Summit
- ▶ Leadership Conclave on Urban Infrastructure and Development
- ▶ Leadership Connect Series
- ▶ International Conference
- ▶ Brand Licensing Conclave
- ▶ Business Connect
- ▶ Golf Tournament

and many more



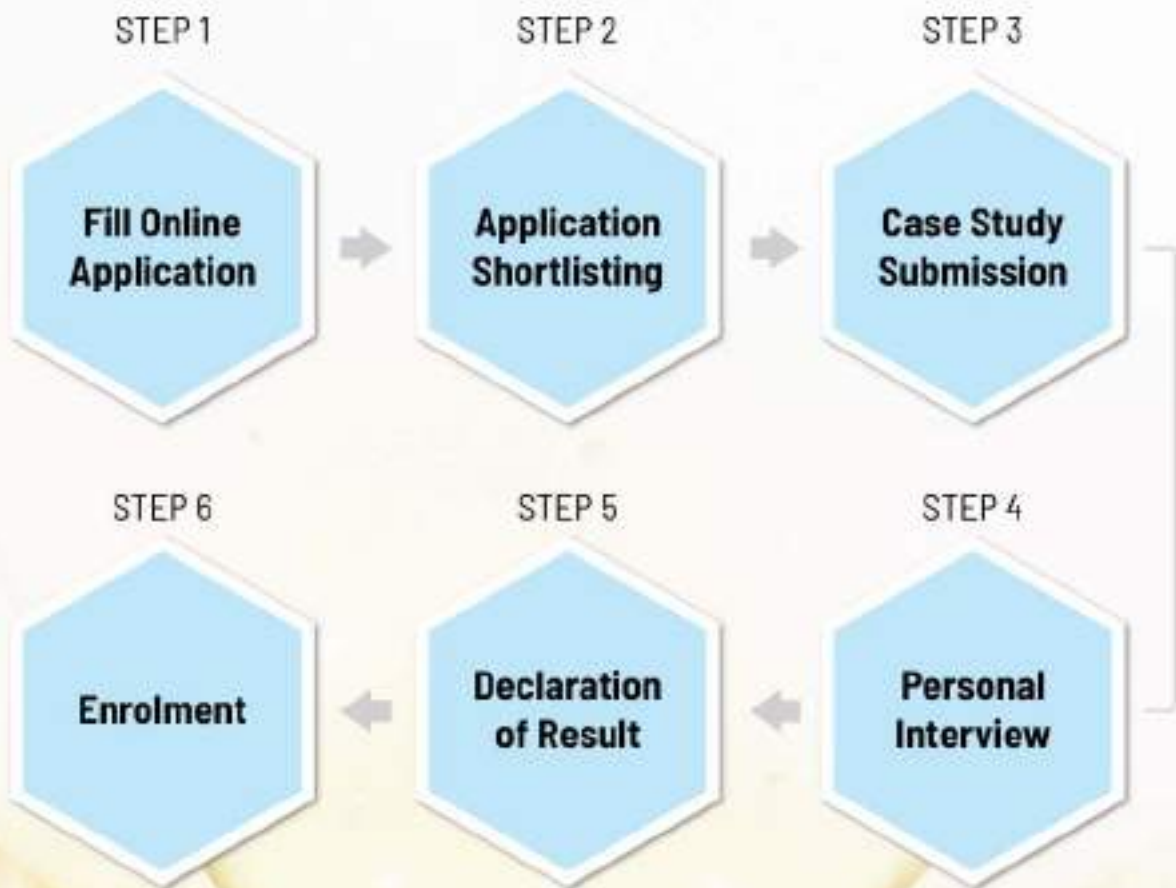
Ajay-Bharat Award, Pt. All Star Coach  
Lexicon PLE Students In-Exchange  
Golf Excellence



# ADMISSION PROCESS

---

At Lexicon MILE, we're committed to shaping the leaders of tomorrow. Our admission process goes beyond selection; it's a journey to understand the role you aspire to play in the world of business and leadership. Join us to embark on a transformative path!



## REFLECTIONS FROM ALUMNI



*"Thanks to Lexicon MLE, I landed a role as an Associate Process Manager—an incredible opportunity for a fresher. I've been involved in every event and campus club, and the memories I've made behind the scenes are unforgettable. My advice to future students is to stay engaged—while classroom learning is important, real growth comes from organizing events and participating in workshops. These experiences are invaluable for your career."*

**Ms. Palak Keshari** - Class of 2024 (Analyst, Morgan Stanley)



*Placements at our college are 100%. They provide a lot of exposure to students. Many companies visit Lexicon MLE like - TIAA, Times Group, HSBC, Bajaj Allianz, Godrej Properties, CBRE, ICICI Bank, FORT, Naukri.com, ZS associates, Fab Hotels, etc. They conduct Personality Development, Business Communication classes to improve the personality of their students.*

*I applied for the PGDM program in Lexicon MLE, and I am fully satisfied with my decision. At first, I filled the application form for this college, after that I received GD/PI call and my interview was scheduled by the college management. After my interview round, I received the mail from the college notifying me of my interview results.*

**Mr. Navnit Kumar** - Class of 2023 (Process Manager - Investment Banking - Loan Syndication, eDora)



*Companies which visit our college for placements are good. Every student got placed with a good designation. Every student from our course got Internships which were paid, and we learned a lot from that. Top roles depend on the specialisation which students choose. Roles offered are mostly satisfying for students. The library contains every material which students should have in a management institute. The food served in the canteen is above average. However, the new Chinese cuisine added by our college is outstanding with reasonable prices.*

*Faculty members here are highly supportive with very good knowledge of their subjects. Every mentor is helpful and knowledgeable. The entire course curriculum is relevant. Teachers are performing excellently in these online lectures. They conduct online competitions and interactive sessions with students.*

**Mr. Nihar Kamboj** - Class of 2022 (Human Resources Compliance Manager, Google)



*The college has excellent facilities like classrooms, labs, libraries and auditoriums. The quality of the hostel and the food available to us is really good. Medical facilities are available. Sports tournaments are also conducted on a regular basis. You will enjoy a lot here.*

*Every student gets placed here. Good companies like TIAA, eDora, HSBC, Bajaj Allianz and many more visit our campus and offer excellent placements, so no need to worry about placements. The teachers and mentors are really helpful in giving you exposure. Almost all the students got good internships. The teachers in our college are good. They help and guide us for placements and internships as well. All the events conducted here are huge, and you will get to learn so much here.*

**Ms. Arzoo Syed** - Class of 2022 (Community Associate, Fountaine Inc.)

Scan the QR code to discover our students' experiences:



## REFLECTIONS FROM PARENTS



*"Lexicon has transformed our child into a confident, engaged and smart young professional.*

*The campus support and placement opportunities have truly boosted her confidence and prepared her for success!"*



**Ayushi Verma's Parents**  
(Class of 2024)



*"I'm filled with gratitude for the faculty at Lexicon MILE. Our child's confidence has grown—he now speaks with clarity, actively participates in activities, and is no longer shy. I couldn't be happier!"*



**Shayan Nath's Mother**  
(Class of 2025)



*"My son fulfilled my dream by completing his education at Lexicon MILE. I'm deeply grateful to the faculty for guiding him up the ladder of success!"*



**Nikunj Gayakwad's Father**  
(Class of 2022)



*Never seen him clicking a selfie before, and if he has been clicking one with his Degree, he is proud. That is all we wanted; he realizes his potential.*

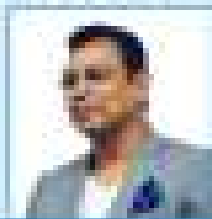


**Rajas Lawande's Father**  
(Class of 2019)

## CORPORATE TESTIMONIAL



"Laxico students impressed me with their curiosity and drive - qualities essential for success in the corporate world. With the knowledge and certifications Laxico provides, they're well-prepared to succeed."

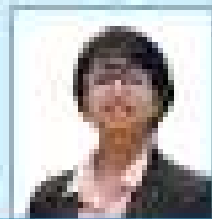


**MR. NEERAJ JHA**

Group President &  
Chief Communications Officer,  
The Bajaj Group



"Thanks to the college for organizing events that allow students to interact with industry leaders. It's a reliable opportunity for them to gain real-world insights and connect theory with practice."

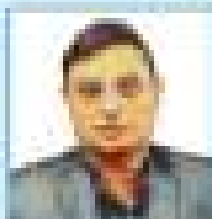


**MS. SMITA  
MUKHERJEE**

Talent Acquisition Manager,  
Capgemini India



"It was impressive to see Laxico MUE students so engaged and knowledgeable about the current media landscape and TV news. Their enthusiasm and curiosity about the industry are inspiring. They clearly have the drive and tenacity needed to succeed in today's dynamic media environment."

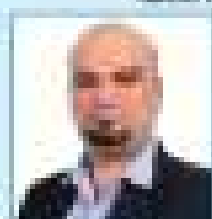


**MR. JITENDRA DIXIT**

Journalist, Author  
and Host India Culture  
and TV Network



"Bringing on interns from Laxico MUE has been an outstanding decision for our organization. These bright minds bring fresh perspectives and a readiness to tackle real-world challenges with confidence. Their contribution has been impactful, and we've already extended full-time positions to these talented individuals. We look forward to a continued partnership with Laxico MUE and the next wave of driven, job-ready talent they bring forward!"



**MR. VISPI KARKARIA**

Early Career Talent India,  
Philips India



# PGDM COURSE FEE STRUCTURE

Part A: Batch 2025-27 Tuition Fees:

Sr. No.	Particular	Amount
1	Registration Fees	<b>Rs. 50,000/-</b> (Fifty Thousand Only)
2	First Year Tuition Fees (1st Installment)	<b>Rs. 2,25,000/-</b> (Two Lakh Twenty Five Thousand Only)
3	First Year Tuition Fees (2nd Installment)	<b>Rs. 2,25,000/-</b> (Two Lakh Twenty Five Thousand Only)
4	Second Year Tuition Fees	<b>Rs. 5,30,000/-</b> (Five Lakh Thirty Thousand Only)
<b>Total Fees</b>		<b>Rs. 10,30,000/-</b> (Ten Lakh Thirty Thousand only)

Account Details for Part - A Payment

Account Holder	Lexicon Management Institute of Leadership and Excellence
Bank Name	Kotak Mahindra Bank Ltd
Branch Name	Ramwadi, Pune - Nagar Road, Pune
Account type	Savings Account
Bank A/c No	7611533804
IFSC Code	KKBK0000730

# PGDM COURSE FEE STRUCTURE

Part B: Batch 2025-27 Other Fees (This must be paid with the first-year fees)

Sr. No.	Particular	Amount
1	Alumni Fees (One Time)	<b>Rs. 10,000/-</b> (Ten Thousand Only)
2	Administration Fees (One Time)	<b>Rs. 35,000/-</b> (Thirty Five Thousand Only)
3	Refundable Caution Deposit	<b>Rs. 5,000/-</b> (Five Thousand Only)
<b>Total Fees</b>		<b>Rs. 50,000/-</b> (Fifty Thousand Only)

Account Details for Part - B Payment

Account Holder	Lexicon Management Institute of Leadership and Excellence - A unit of LLPL
Bank Name	Kotak Mahindra Bank Ltd
Branch Name	Ramwadi, Pune - Nagar Road, Pune
Account type	Current Account
Bank A/c No	5111793292
IFSC Code	KKBK0000730
<b>Total Fees (Part A + Part B)</b>	<b>Rs. 10,80,000/-</b> (Ten Lakh Eighty Thousand Only)

## Mode of Payment

- Cheque or Demand Draft should be drawn in favor of "Lexicon Management Institute of Leadership and Excellence" Payable at Pune.
- Through NEFT/RTGS / Google Pay / Phone Pay / Paytm.

**Admission Cancellation & Refund Policy:** As per AICTE Norms

\*Note: Fees mentioned above does not include Hostel and Mess fees at Lexicon MILE, Pune.  
Disputes - All disputes are subject to Pune Jurisdiction only.

## SCHOLARSHIP

---

At Lexicon MILE, we believe in nurturing talent and making quality education accessible. To support this vision, we offer scholarships based on merit and need. Our scholarships are designed to recognize outstanding academic achievements and provide financial assistance to deserving students.

- ▶ **Need Based Scholarship**
- ▶ **Merit Based Scholarship**
- ▶ **Unique Achievement Scholarship**

## BANK OPTIONS

---

For those seeking educational loans, we are pleased to share that we have partnerships with reputed banks who provide educational loans at nominal interest rates.

If faced with difficulties in to contact/processing loans, please get in touch with the admissions team.



Ensuring health, safety,  
and a positive campus  
environment.



SCAN TO APPLY



VIRTUAL TOUR



**Mr. Vikram Singh**

☎ +91 9717536537

**Mr. Mazhar Sayed**

☎ +91 8956059559

**Mr. Sachin Gupta**

☎ +91 80870 58399

**Ms. Soumya Mishra**

☎ +91 91401 63543

✉ admissions@mile.education

🌐 www.lexiconmile.com

📍 GAT No. 726, Nagar Road, Wagholi, Pune, Maharashtra 412207